

TOURING series

CLUB SOUND

INSTALLED speakers

ELECTRONICS

# DSM

# DIGITAL SPEAKER MANAGEMENT

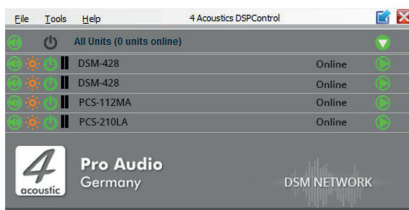


## DSM

— P. 128

# DSM-428-FIR

Tu digital speaker management



## technical data

GS1 (EAN) CODE	4260318511681
System Type	4 IN / 8 OUT Digital Speaker Management
Inputs	4 analog Inputs with 125dB(A) dynamic range 1 AES/EBU input (2 channels) AES67 (Dante) optional
Max. Input Level	+24dBu
Input Type	Electronically balanced
Input Impedance (balanced)	21 KOhm
Input Impedance (single ended)	10,5 KOhm
Outputs	8 analog Outputs with typ. 120dB(A) dynamic range
Max. Output Level	+12dBu
Output Type	Electronically balanced matched-impedance
DSP THD (@0 dBu, 1 kHz)	<0,005
DSP Frequency range	10Hz to 40kHz
Gain	0 dB +/-0,5 dB
Dynamic Range	typ.120 dB(A)
Dynamic Range with 12dBu output level	>116 dB(A)
Latency	350 microseconds
Sample Rate	96 kHz
Processing	64 bits multi-mode digital processing
PC Remote	USB and Ethernet PC connection
Operating Voltage	85 VAC to 264 VAC
Dimensions (h/w/d)	19"/1U 483W x 190D x 44H
Net weight	2.55 Kg

# dsp function

EQ's	10 parametric filters per input and output
EQ Type	Bell, High Shelf, Low Shelf, Notch, Allpass, Band Pass, High Pass, Low Pass
FIR	8 x 384 Taps
Delay Times	2000ms delay per input, 50ms delay per output
Crossover	Butterworth, Bessel, Linkwitz-Riley filters up to 48dB / oct.
Compressor	3 Band each input and output
Limiter	Switchable Limiter Zero Attack Peak Limiter / True RMS Limiter
Library	4-Acoustic Loudspeaker Library support

